

A Maximum Power Point Tracking in Wind Energy Conversion Systems using Machine Learning

S.Venkatesh Kumar, P.Sebastian Vindro Jude, K.Balamurugan



Abstract: In this paper, an efficient and feasible algorithm to extract the maximum power point (MPP) in wind energy conversion systems (WECS) by implementing machine learning (ML) into perturb and observe (P&O) algorithm is presented. The proposed algorithm is simulated on a separately-excited DC generator. This model uses instantaneous measurements of wind speed, humidity, temperature, pressure and generator speed to estimate a MPP by using ML at the end of each iteration. From this estimated power point, the controller follows quick perturbation to calculate the accurate MPP and is used as training data for further predictions in the next iteration. The controller learns from this training set and estimates the MPP closer to the maximum achievable power (MAP) which is corrected again through perturbation and is recorded. With the progress of time, the approximation of the maximum power point becomes more accurate whilst the time in further perturbation required for modification decreases. This model adapts to the versatile climatic conditions and yields an efficiency of 99.95% in predicting the MAP at the end of 1000 iterations corresponding to 2 hours 30 minutes.

Keywords: Wind energy conversion systems, Maximum power point tracking, Perturb and Observe, Machine Learning, Artificial Intelligence

I. INTRODUCTION

This Majority of the energy requirements in today's world are met with fossil fuels which are costly, non-renewable and pollute the environment. There is a necessity to switch to green energy resources. A lot of research is carried out in this area to find alternative energy resources that are renewable and can be easily harnessed. Such existing resources are solar and wind energy. Wind energy is a good alternative and is environmental friendly. Almost all regions throughout the world receive enough wind to produce energy on a large scale. Wind energy conversion systems (WECS) are of major importance in recent days [1]. There is a need to optimise the process of harnessing wind energy. An effective mechanism is thus required to efficiently harness maximum wind energy power. Since wind speed is continuously changing, it is difficult to extract a continuous and maximum power. Hence, there is a need for WECS to be carried out efficiently.

An efficient and cost-effective system for capturing the maximum power is required. WECS consists of a wind turbine, charger controllers and an inter-connection apparatus to supply the generated power from the wind to the transformers for further distribution. During windy periods, the wind cuts the blades of the turbine and causes the blades to rotate which in turn generates a torque. Wind energy power output can be analyzed based on the Power (P)- current (I) curve. The power-current characteristics under different wind speeds are shown in Fig.1.

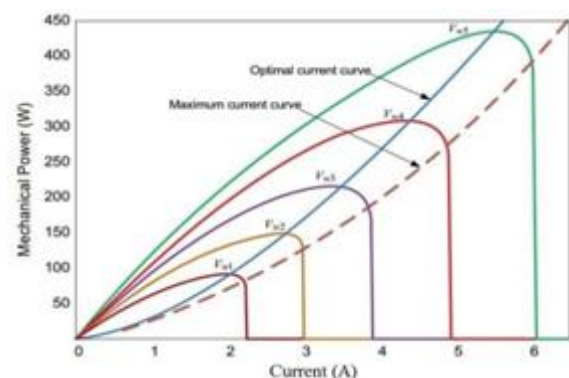


Fig. 1. The Power-Current graph under constant wind speed.[2]

A load impedance is required for the generator to change the values of current and thus track the maximum power at different wind speeds. Since the graph plotted keeps shifting from its original position as the wind speed is changing continuously, this fluctuates the peak point of power. Therefore, the load impedance is required to be updated again to get the maximum power characteristic values for voltage and current. The process is known as maximum power point tracking (MPPT). MPPT is carried out by designing efficient charger controllers for extracting maximum power from WECS. The charger controller is designed to control and optimize the generated power. Various methods like perturb and observe (P&O) [3], method of incremental conductance [4], method of fractional voltage[5], neural network [6] and fuzzy logic control [7], etc., are used in a charger controller to generate efficient power outputs. These algorithms have been compared on the basis of complexity, efficiency, performance, etc., are listed in Table 1.

Table I. Comparison Of Different Mppt Techniques [6]

Technique	Convergence Speed	Complexity	Tuning	Parameters
Perturb and Observe	Varies	Low	No	Voltage
Incremental Conductance	Varies	Medium	No	Voltage, Current

Revised Manuscript Received on April 02, 2020.

* Correspondence Author

S.Venkatesh Kumar*, Assistant Professor(Sr.Gr), Department of EEE, Department of EEE Coimbatore, Tamilnadu, India
venkateshkumar.s@sec.ac.in

P.Sebastian Vindro Jude, Assistant Professor(Sr.Gr), Department of EEE, Department of EEE Coimbatore, Tamilnadu, India
jude.panimayam@sec.ac.in

K.Balamurugan, Assistant Professor(Sr.Gr), Department of EEE, Department of EEE Coimbatore, Tamilnadu, India

© The Authors. Published by Blue Eyes Intelligence Engineering and Sciences Publication (BEIESP). This is an open access article under the CC BY-NC-ND license (<http://creativecommons.org/licenses/by-nc-nd/4.0/>)

Fractional Voltage	Medium	Low	Yes	Voltage
Fractional Current	Medium	Medium	Yes	Current
Fuzzy Logic Control	Fast	High	Yes	Varies
Neural Network	Fast	High	Yes	Varies

In this paper, an alternative approach to overcome the limitations of existing methods is described. The proposed design uses machine learning (ML) into perturb and observe to estimate the maximum power point (MPP). ML is a type of artificial intelligence that provides system the ability to learn without manually programming. It focuses on the developing software programs that can learn on its own and vary on exposure to new set of data. Results have been compared with the existing methods on the basis of efficiency and performance.

II. SYSTEM MODEL

Fig.2. describes the functioning of the proposed wind energy conversion system. The system comprises of a buck converter is coupled with a DC generator This acts as a DC to DC converter that controls the proportion of input to output voltage by a pulse width modulation (PWM) signal via charger controller. where, ρ is the air density, A is the area covered under the rotor blade, v is the wind speed (m/s). This is ideal power fed to the wind turbine. But there is a theoretical limit to which this power can be utilized in practice. This limit is governed by Betz's law [9] which illustrates the maximum power that can be extracted from the wind turbine, independent of its design. According to the Betz's law, no turbine can capture greater than 59.3% of the kinetic energy of the wind.

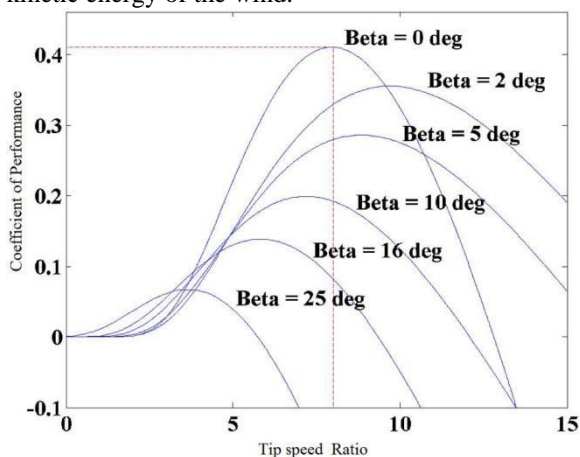


Fig. 3. $C_p(\lambda, \beta)$ vs λ characteristic curve for different β . [11]

The generated power by the wind turbine depends on the efficiency factor, also known as coefficient of performance $C_p(\lambda, \beta)$ of the wind turbine which depends on pitch angle (β) and tip speed ratio (λ). The tip speed ratio is the ratio of the turbine speed to the wind speed and is given by:

$$R\omega = \lambda v \quad (2)$$

where, ω is the angular speed of the turbine and R is the radius of the turbine. Hence the actual power (P) generated by the wind turbine as follows:

$$P = C_p(\lambda, \beta) P_m = \frac{1}{2} C_p(\lambda, \beta) \rho A v^3 \quad (3)$$

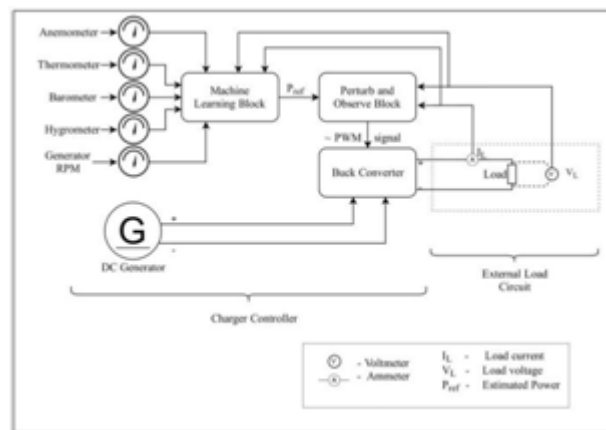


Fig. 2. The configuration of wind energy conversion system.

A. Separately excited DC generator Model

The coefficient of performance has a maximum value of

$$C_p(\lambda, \beta) = 0.5(116 \frac{1}{\lambda_i} - 0.4\beta - 5)e^{\frac{-21}{\lambda_i}} \quad (4)$$

0.593. The turbine's coefficient of performance is a nonlinear function and is expressed by [10]:

The wind energy conversion system transforms the mechanical energy into electrical energy. The mechanical power (P_m) fed to the wind turbine is described as kinetic energy (KE) of the wind turbine rotor blade per unit time (t) [8]:

Where, β is the pitch angle and $1/\lambda_i$ is:

The characteristic curve for coefficient of performance $C_p(\lambda, \beta)$ versus tip speed ratio (β) for various values of the pitch angle (λ) is shown in Fig.3.

B. Buck Converters

A Buck Converter[12] is a DC-to-DC converter that steps down voltage whilst increasing current from its input supply to its output load. This device is essentially a switched-mode power supply typically containing at least two semiconductors (a transistor and a diode), a minimum of one capacitor, inductor or a combination of both and is used for stepping down DC voltage. A PWM signal is used for controlling the clock cycles of the stepping-down operation. A buck converter circuit is shown in Fig.4.

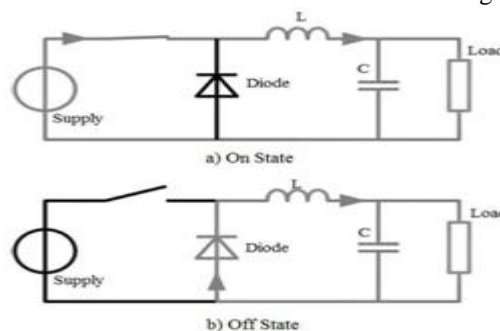


Fig. 4. A circuit showing modelling of buck converters [12].

C. Perturb and Observe

Perturb and Observe (P&O) algorithm is the most simple and efficient method for MPPT in wind-energy conversion systems [13], [14]. In this method, a controller adjusts the output power of the separately excited DC generator by controlling the duty cycle (PWM) of the buck converter and measures the rise and fall in power continuously. If there is an increment in the power on increasing the duty cycle, then the power point close to the maximum achievable power (MAP). It uses a localised linear regression model based on characteristic parameters (b_i as given in equation 7) of

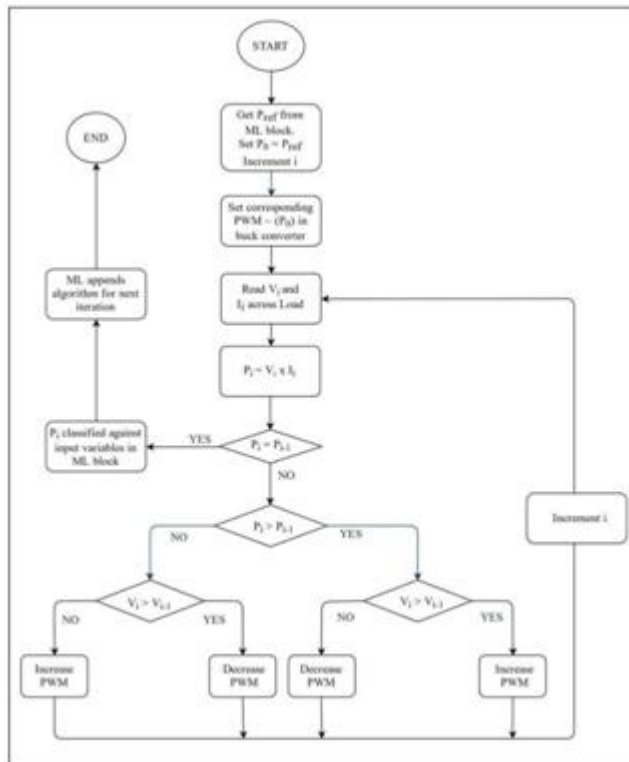


Fig. 5. Flowchart depicting P&O algorithm.

previously observed MPP(s) and current wind speed, humidity, pressure, temperature, and generator RPM. The proposed system is a causal system. This model generates an algorithm and recognizes patterns in the formation of the MPP(s). As time progresses, the feedback updates the estimation algorithm. The system recognizes more patterns and refines the regression model parameters as in equation 7 and equation 8. duty cycle is increased further in the same direction. If there

$$P_i = F_i (I_0, \dots, I_{i-1}) \quad (6)$$

is a decrement in power, then the direction is reversed and the

process is repeated in the opposite direction until there is no further rise in power. Hence the characteristic parameters of this point being the maximum power point are recorded and the optimum power is generated using them. This algorithm is frequently used in wind power generation due to its ease of A Buck Converter [12] is a DC-to-DC converter that steps down voltage whilst implementation. A flow chart depicting P&O algorithm using buck converters has been shown in Fig.5 where P_i is the calculated power in the current iteration and P_{i-1} is the power of the preceding iteration.

D. MPPT Algorithm

Here $\phi(t)$ is the MPP at time t . The ML algorithm is represented as F_t for ease of understanding. It is the estimation function at time t using the dataset of MPP(s) at previous iterations ($\phi_0, \dots, \phi_{t-1}$) and the characteristic variables as in equation 7. The obtained result is passed on to the next block as P_{ref} and from here the algorithm follows regular P&O to obtain the MPP (P_t) using a synchronous Buck DC - DC converter. A linear regression model is generalized by the following formula. The prediction of Y_i is computed by equation 7 [15].

The proposed method is a modified approach to Perturb

$$Y = b_0 + b_1 X_1 + \dots + b_k X_k + \epsilon_i \quad (7)$$

and Observe algorithm. The process of Machine Learning (ML) is similar to data mining, however the obtained results and conclusions from the older data are used to estimate results for the new data. Hence, an artificial intelligent supervised learning technique is used in this paper. The machine learning algorithm used in this model estimates a

Where b_k are the regression coefficients, X_{ki} are the regressor variables or the input variables and ϵ_i is the error at iteration i . Y' is the mean of all the predicted values of Y (MPP) using variable inputs X_{ki} and with k predictor variables.

The b_k values act as regression weights and are computed in order to minimize σ , where σ is the sum of squared deviations as shown in equation 8. Here N is the number of iterations.

$$\sigma = \sum (Y_i - Y')^2 \quad i=1 \quad (8)$$

III. EXPERIMENTAL RESULTS

A graph between maximum available power (MAP) and predicted MPP is shown in Fig.6.

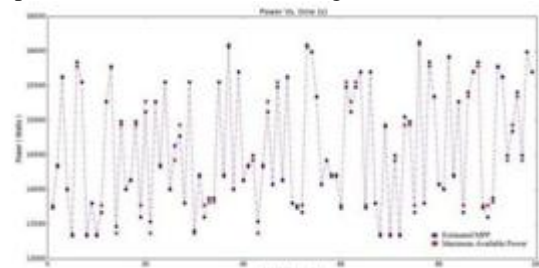


Fig. 6. Comparison of estimated Power ϕ_t (blue) and maximum available power (MAP) P_t (red).

The prediction of function F_t to the MAP ϕ_t is much more accurate than F_{t-1} . Fig.7 shows the mean error in estimating the MPP after each iteration. It is evident that the error is decreasing. After each iteration, the system tries to fit more patterns and the error obtained decreases with time. Hence the system learns.

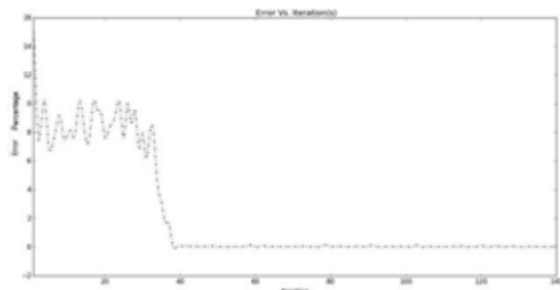


Fig. 7. Mean error at each iteration.

From Fig.8, the efficiency of the proposed MPPT. The Fig.9. and Fig.10. shows the dynamic responses of the generated voltage and current obtained from the proposed MPPT algorithm with respect to time. In this domain, a validation dataset obtained from P&O is fed back, after each iteration into the training data, this limits the errors from increasing. Thus, machine learning overcomes overfitting that usually occurs in other AI algorithms such as artificial neural networks (ANN) and other logic-based control systems.

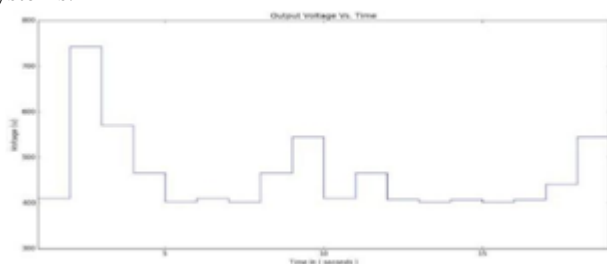


Fig. 9. Output Voltage based MPPT control.

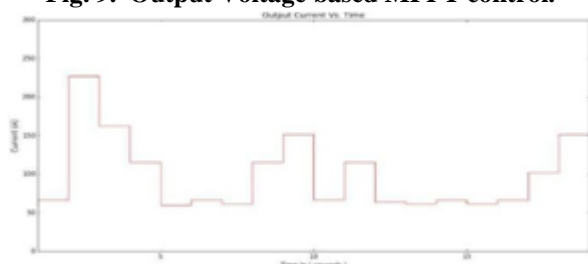


Fig. 10. Output Current based MPPT control.

The above figures show the advantages of using machine learning into perturb and observe. The estimation technique implemented overcomes many of the issues faced in existing MPPT algorithms. These include higher efficiency, faster convergence, ease of implementation and higher precision in estimation.

$$\frac{1}{t} = (100 - \Delta^t) \% \quad (10)$$

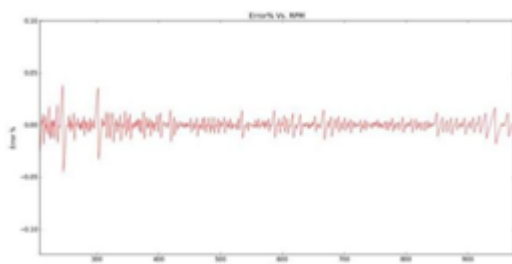


Fig. 8. Percentage error at each RPM of the DC generator at time t = 2.5 hours or 1000 iterations error at each iteration.

IV. CONCLUSION

In this paper, a highly intelligent method to track maximum power point under varying weather conditions is described. A Python based simulation of a wind energy conversion system with a DC load has been carried out to validate the proposed MPPT method. The results showed that the proposed MPPT method tracked the MPPT with negligible oscillations. Observations show that the performance and accuracy of the proposed method is not influenced by the variations in load at all. The perturbation time increases during unexpected wind speeds, but the proposed algorithm gradually learns and adapts to the new weather conditions. The main advantages of the proposed MPPT control method are faster convergence to the MPP, higher efficiency, robustness and its possibility for easy implementation. The system is a modified algorithm of P&O and can be cascaded to the existing P&O equipment with convenient setup and thus, resulting in better efficiency.

REFERENCES

1. H. Li and Z. Chen, "Overview of Different Wind Generator Systems and Their Comparisons," *Renewable Power Generation*, Vol. 2, No. 2, 2008, pp. 123-138.
2. Ministry of New and Renewable Energy – MNRE.
3. R. Melicio, et al., "Power Converter Topologies for Wind Energy Conversion Systems: Integrated Modeling, Control Vol. 35, No. 10, 2010, pp. 2165-2174.
4. Shukla R.D., Tripathi R.K., Gupta S., "Power Electronics Application in Wind Energy Conversion System: A Review" ICPES- 2010 MNNIT Allahabad India.
5. Ikni, D., Camara, M. B., Payman, A., & Dakyo, B., "Dynamic control of wind energy conversion system", 2013 Eighth International Conference and Exhibition on Ecological Vehicles and Renewable Energies (EVER).
6. Eltamaly, A. M., & Farh, H. M. "Smart maximum power extraction for wind energy systems", 2015 IEEE International Conference on Smart Energy Grid Engineering (SEGE).
7. P. Singh, S.M. Tripathi and N. Mishra, "Recent trends in power converters for wind energy conversion system with grid integration impact," *International Journal of Research in Engineering & Applied Sciences*, vol. 02, issue: 02, pp. 1660-1661, Feb. 2012.
8. I. S. M. Kulam, P. Aravindan, and M. Y. Sanavullah, "Mppt based permanent magnet synchronous generator for wind energy conversion system," *International Journal of Communications and Engineering*, vol. 04, issue: 02, pp. 421-434, Mar. 2012.
9. V. K. Dwivedi, M. Bajaj, and A. Kumar, "Power electronics converters for a wind energy conversion system: Review," *International Journal of Scientific & Engineering Research*, vol. 04, issue: 06, pp. 2686-2693, Jun. 2013.
10. R. Melicio, V.M.F. Mendes, and J.P.S. Catalao, "Power converter topologies for wind energy conversion systems: Integrated modeling, control strategy and performance simulation, renewable energy," *IEEE Trans. Industry Applications*, vol. 35, no. 10, pp. 2165-2174, Oct. 2010.

AUTHORS PROFILE



Mr. S. Venkatesh Kumar is an Assistant Professor (Senior Grade) in the Department of Electrical and Electronics Engineering at Sri Ramakrishna Engineering College. He has teaching experience of more than 8 years. He did his post graduate degree in Applied Electronics from Dr. Mahalingam college of Engineering and Technology and his undergraduate degree in Electrical and Electronics Engineering from Sri Subramanya College of Engineering and Technology. His areas of interests are Renewable Energy and Electrical machines.





Mr.P.Sebastian Vindro Jude is an Assistant Professor in the Department of Electronics and Electrical Engineering at Sri Ramakrishna Engineering College. He did his post graduate degree in Energy Engineering from National Engineering College, Kovilpatti and his under graduate in Electronics and Electrical Engineering from Govt. College of Engineering, Bargur. He is having teaching experience of more than 8 years. He had published papers in 03 International journals, 06 National Conferences and 02 International Conferences. His area of research is Wind Energy, and his areas of interests are Solar energy and Electrical Machines.

K.Balamurugan is an Assistant Professor (Senior Grade) in the Department of Electrical and Electronics Engineering at Sri Ramakrishna Engineering College. He is currently pursuing part time Ph.D. in Anna University, Chennai in the field of Torque and Ripple minimization of Industrial Machines. He procured his post graduate degree in Power Electronics and Drives from Kumaraguru College of Technology, Coimbatore and his under graduate degree in Electrical and Electronics Engineering from Muthayammal Engineering College, Rasipuram. He has a teaching experience of more than 9 years. He is proficient in the application of Integrated circuits. He is currently an Expert Panel Member for Institute for Innovation in Science and Technology, Hyderabad.